



AGFORCE – MINING FIELD DAY: ALPHA

CHAIRMAN

Professor David Brereton,
Deputy Director
Sustainable Minerals Institute
The University of Queensland

The Chair's role

- Manage time
- Facilitate understanding
- Be impartial and enable dialogue
- Summarise key points from the day



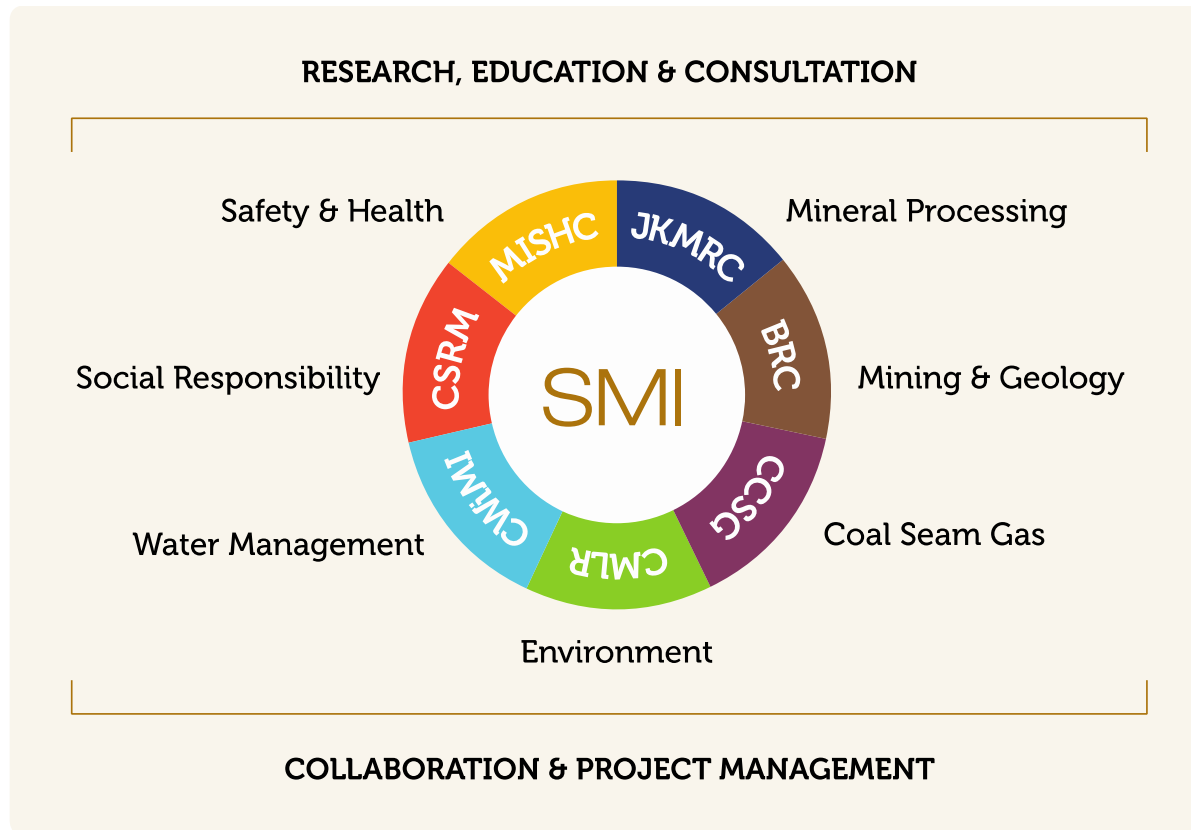
The University of Queensland



- Founded in 1910
- 43,731 students & 6,300 staff
- Annual Budget of over \$1.6b
- One of the top three research universities in Australia
- Strong focus on industry engagement, including in mining, agriculture and now CSG.



The Sustainable Minerals Institute



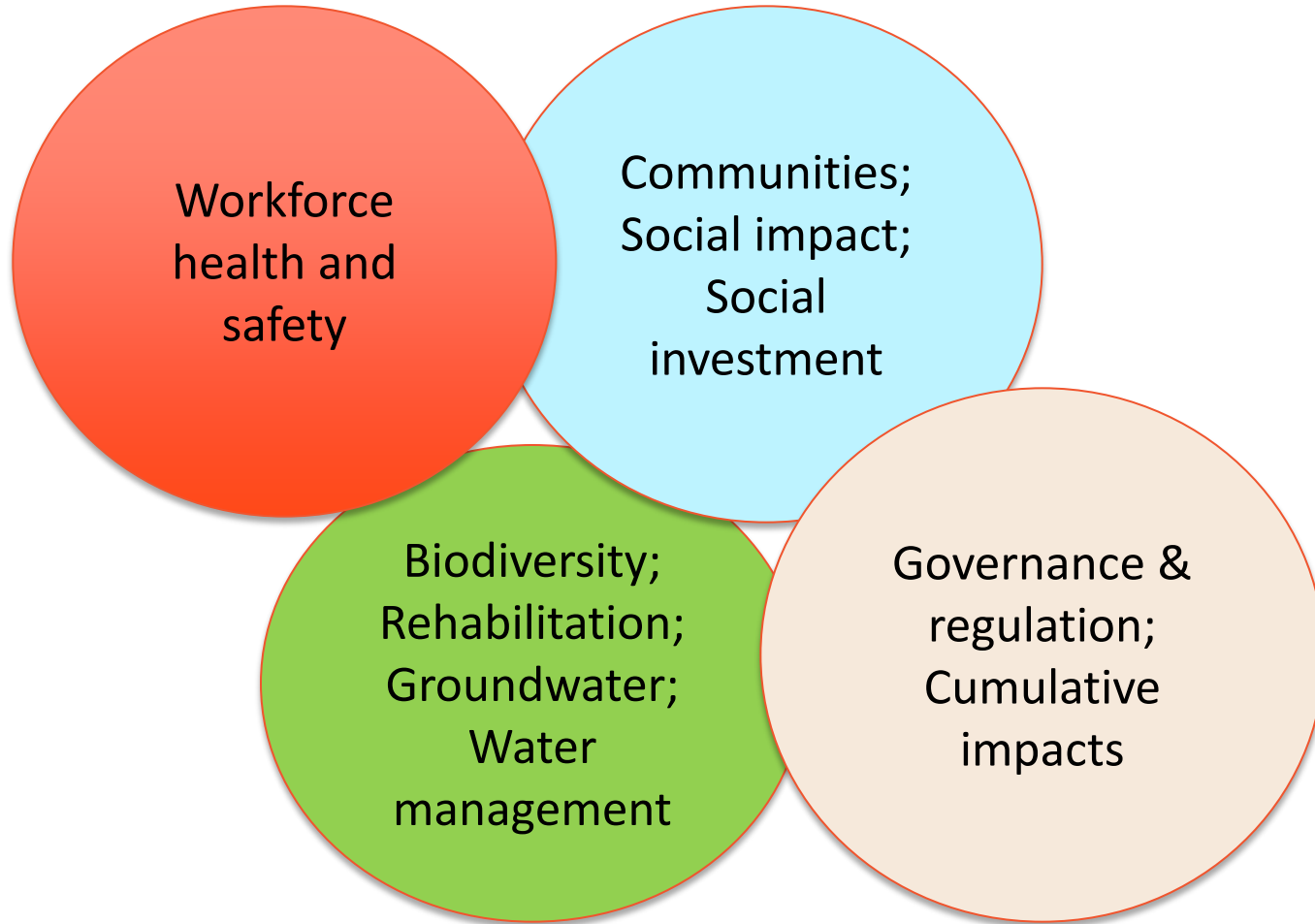
~\$45m pa research
~\$15m pa commercial

Industry represents:

~70% research
>90% revenue



SMI Research themes relating to Coal Mining



How we maintain research integrity and quality

- Science-based approach
- Bound by UQ Research Ethics, Policies & Procedures
- Publication and peer review
- Research contracts contain additional protections (e.g. 'right to publish' clauses).
- Transparency about funding sources.



How the day will run

Morning (10-12)	Afternoon (1-4pm)
Welcome and Introductions	Small group discussions
Presentations	Wrap-up
Summary	Close-out



Aims of the day

1. Communicate information
2. Address knowledge gaps
3. Increase understanding of the issues
4. Help people to link up

The day is not about:

- Debating the pros and cons of coal mining
- Dealing with individual grievances



Some rules for the day

- Keep questions & comments for the afternoon sessions
- Stay on topic: we are here to talk about water, groundwater management, rail and the assessment process
- Be concise: no soap-boxing (time's short)
- Be polite & respectful
- Phones on silent!

